

Late Lunch Menu
12pm — 5pm



Late Lunch

Organic Smoked Salmon from
Inverawe on Irish Soda Bread — 12.50 / 6.50

Irish Cheese Board — 12.50 /
One Cheese and Soda Bread — 5.00
Cashel Blue (V), Gubbeen, Cooleeney Camembert
(V) with Soda Bread and Ballymaloe Relish

Charcuterie Board from the Gubbeen
Smokehouse Co. Cork — 16.00
Salami, Pepperoni and Chorizo with Caperberries,
Gherkins

Refreshments

PRESS Juices — 4.50
PRESS Immunity Health Tonic Shot — 3.50
Smoothie of the Day — 4.80
Orange Juice — 3.50
Cloudy Apple Juice — 3.50
Pink lemonade — 3.00 / Large Bottle — 8.00
Plum + Cherry — 3.00
Sloe Lemonade — 3.00
Strawberry + Rhubarb — 3.00
Ginger Beer — 3.00
Curiosity Cola / Victorian Lemonade — 3.00
Coke / Diet Coke — 3.50
Club Orange / Club Lemon / Cidona — 2.50

*Allergen Advice: at J+A Cafe we do use and
store foods containing allergens. We follow
correct procedure to avoid cross-contamination
but cannot guarantee no-trace.

Follow us on Twitter + Instagram — @jandacafe

Fresh Baked Cakes

Chocolate Guinness Cake — 4.50
Victoria Sponge — 4.50
Chocolate + Hazlenut Brownies — 4.00 (GF)
Freshly Baked Scone with
Cream + Jam — 3.50

*Please ask your waitress for our daily
seasonal bakes....*

Coffee + Tea

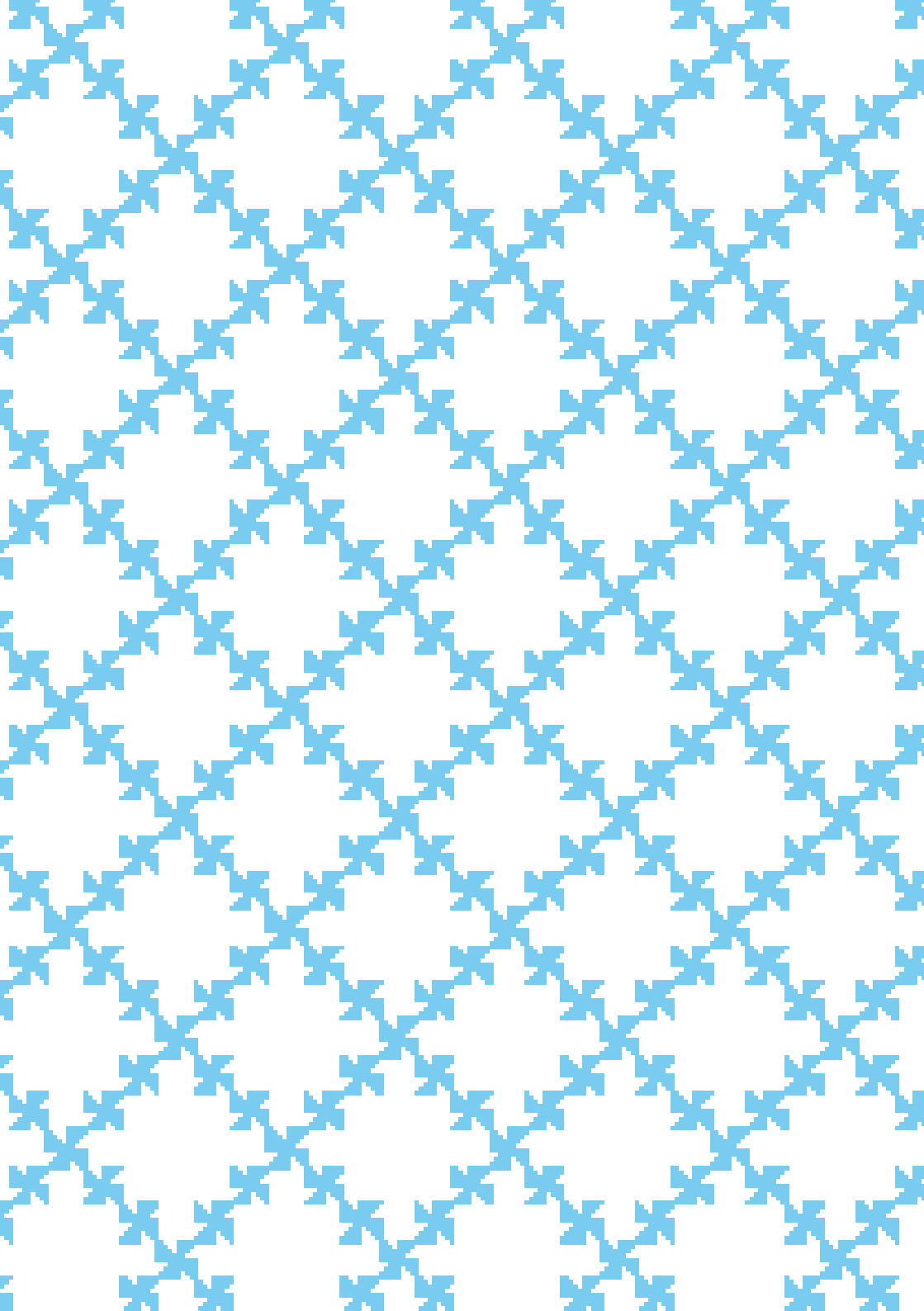
Specialist coffee from Atkinson's Coffee
Espresso / Macchiato — 1.80 / 2.00
Flat White / Latte / Cappuccino — 3.00
Americano — 2.60
Mocha / Hot Chocolate / Iced Coffee / Chai
Latte / Golden Latte — 3.30
Matcha Latte — 3.60
Large Pot of Coffee — 7.50
J+A Irish Coffee — 6.50

Tea — 3.00

Irish Breakfast (C), Earl Grey (C), Chai (C),
Jasmine (C), Wild Blackberries, Blood Orange
Fruit Tea, Chinese Rose Petal, Egyptian Mint,
Silver Needle, Orchid Oolong (C), Breakfast
Roobois, Green Chinese Sencha (C), Lapsang
Souchong (C), Chamomile, Darjeeling

Almond or Soy Milk — 0.50p

J+A's Natural Hot Drink Remedy — 3.80
Lemon, Ginger, Honey and Carageen Wild
SeaWeed - Colds and Coughs



Late Breakfast Menu
11am — Middyay



Baking

Freshly baked Bread — 2.50

Irish Soda / White Crusty / Granary

Toasted with a choice of Jams + Conserves + 1.00

Croissant — 2.50 / Pastry — 2.90

Chocolate Guinness Cake / Victoria Sponge — 4.50

Freshly baked Scone with Cream + Jam — 3.50

Please ask your waitress for our daily seasonal baking...

Hot

Bacon / Sausage Sandwich — 5.00

Mushrooms on Toast — 5.00

Fruits + Grains

Organic Jumbo Oat Porridge with Honey (H) — 4.50

+ Honey / Brown Sugar

+ Cows Milk + Almond Milk + Soya Milk 50p

+ Maple Syrup — 1.00

+ Banana — 50p

+ Apple, Cinnamon + Raisins — 1.50

+ Seeds + Nuts

+ Prunes + Dates — 1.00

+ Berry Compote — 2.00

J+A's Granola / Museli with Yoghurt + Honey (H) — 6.00

Fresh Fruit Salad with Yoghurt + Honey (H) — 7.50

Refreshments

PRESS Juices — 4.50

PRESS Immunity Health Tonic Shot — 3.50

Smoothie of the Day — 4.80

Orange Juice — 3.50 / Cloudy Apple Juice — 3.50

Pink lemonade — 3.00 / Large Bottle — 8.00

Plum + Cherry — 3.50

Sloe Lemonade — 3.50

Strawberry + Rhubarb — 3.50

Ginger Beer — 3.50

Curiosity Cola / Victorian Lemonade — 3.50

Coke / Diet Coke — 3.50

Club Orange / Club Lemon / Cidona — 2.50

Ballygowen Still / Sparkling Water — 2.50

Coffee + Tea

Specialist coffee from Atkinson's Coffee

Espresso / Macchiato — 1.80 / 2.00

Flat White / Latte / Cappuccino — 3.20

Americano — 2.60

Mocha / Hot Chocolate / Iced Coffee / Chai Latte /

Tumeric Latte / Beetroot Latte — 3.50

Large Pot of Coffee — 7.50

J+A Irish Coffee — 7.50

Tea — 3.00

Irish Breakfast (C), Earl Grey (C), Chai (C), Jasmine (C),

Wild Blackberries, Blood Orange Fruit Tea, Chinese Rose

Petal, Egyptian Mint, Silver Needle, Orchid Oolong (C),

Breakfast Rooibos, Green Chinese Sencha (C), Lapsang

Souchong (C), Chamomile, Darjeeling

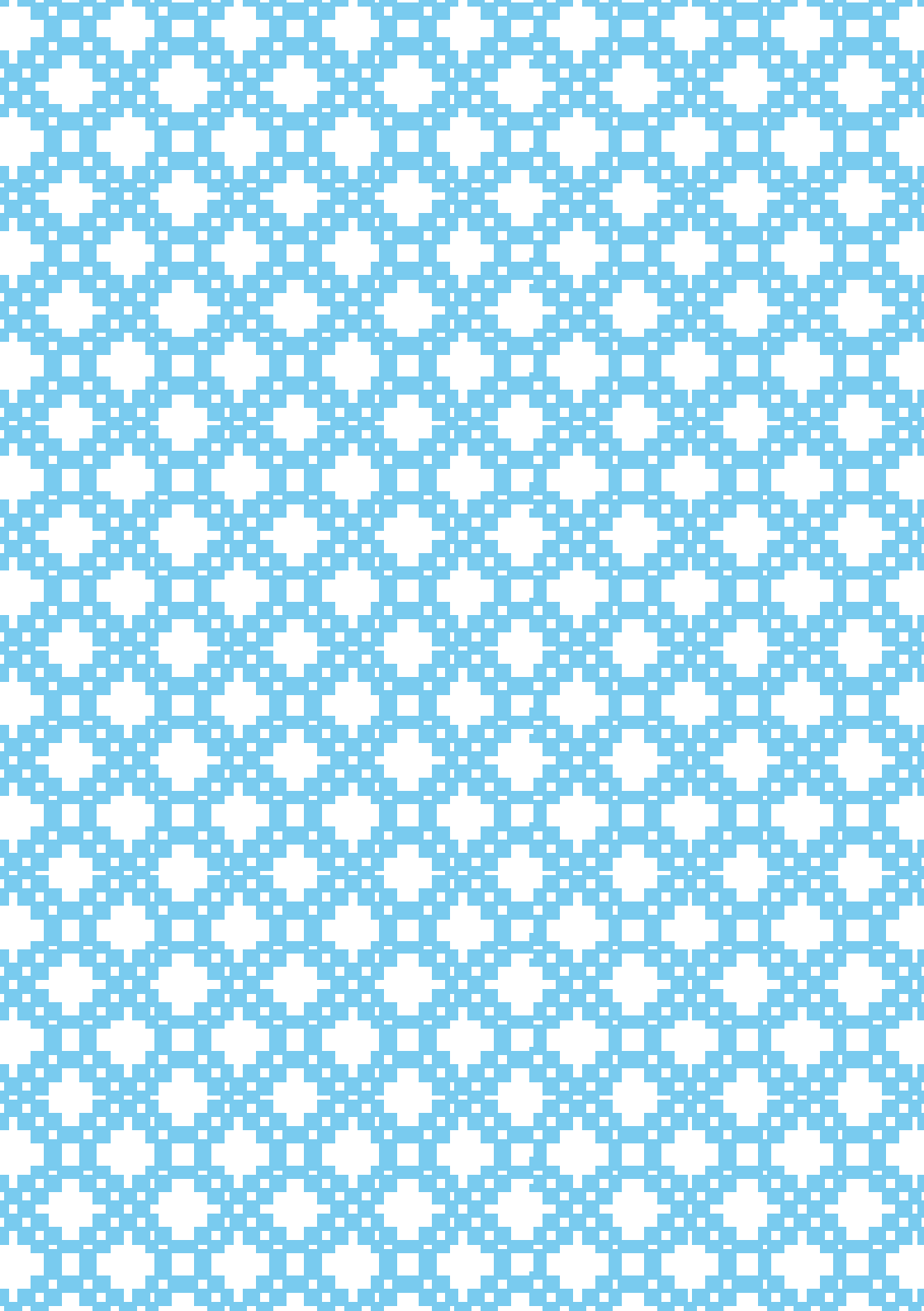
We use Whole Organic Milk

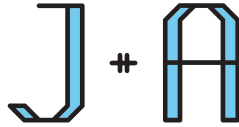
Almond or Soya Milk — 0.50p

*Allergen Advice: at J+A Cafe we do use and store foods containing allergens. We follow

Correct procedure to avoid cross-contamination but cannot guarantee no-trace.

Follow us on Twitter + Instagram — @jandacafe





C A F É



Chocolate Guinness Cake — 4.50

Victoria Sponge — 4.50

Chocolate + Hazlenut Brownies (GF) — 4.00

Freshly Baked Scone with Cream + Jam — 3.50

Please ask your waitress for our daily seasonal bakes....



Refreshments

PRESS Juices — 4,50 / PRESS Immunity Health Tonic Shot — 3,50
Smoothie of the Day — 4,80 / Orange Juice — 3,50 / Cloudy Apple Juice — 3,50
Pink lemonade — 3,00 / Large Bottle — 8,00
Plum + Cherry — 3,50 / Sloe Lemonade — 3,50 / Strawberry + Rhubarb — 3,50
Ginger Beer / Curiosity Cola / Victorian Lemonade — 3,50
Coke / Diet Coke — 3,50
Club Orange / Club Lemon / Cidona — 2,50
Ballygowen Still / Sparkling Water — 2,50



Coffee + Tea

Specialist coffee from Atkinson's Coffee

Espresso / Macchiato — 1,80 / 2,00
Flat White / Latte / Cappuccino — 3,20
Americano — 2,60
Mocha / Hot Chocolate / Iced Coffee / Chai Latte
Turmeric / Beetroot Latte — 3,50
Large Pot of Coffee — 7,50
J+A Irish Coffee — 7,50

Tea — 3.00

Irish Breakfast (C), Earl Grey (C), Chai (C), Jasmine (C), Wild blackberries, Blood Orange Fruit Tea, Chinese Rose Petal, Egyptian Mint, Silver Needle, Orchid Oolong (C), Breakfast Rooibos, Green Chinese Sencha (C), Lapsang Souchong (C), Chamomile, Darjeeling

We use Organic Whole Milk

Almond or Soya Milk — 0.50p

